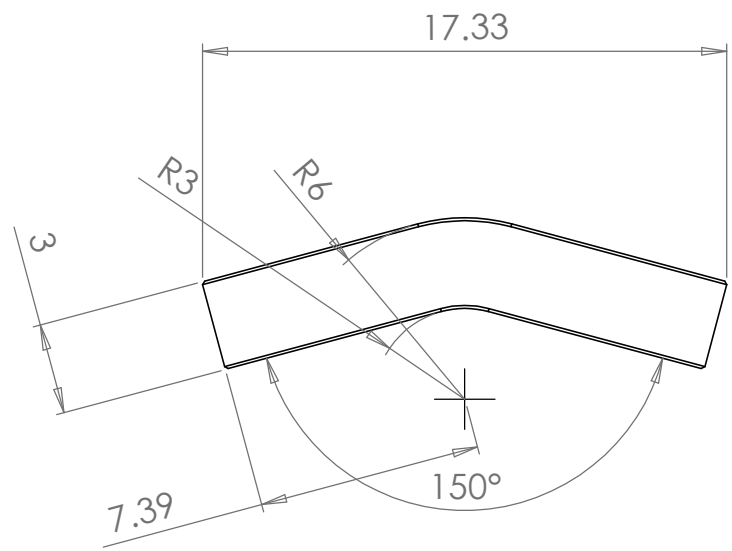
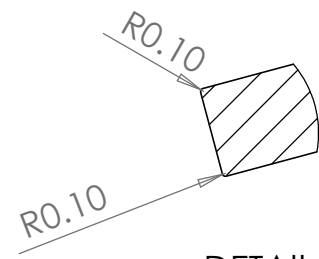


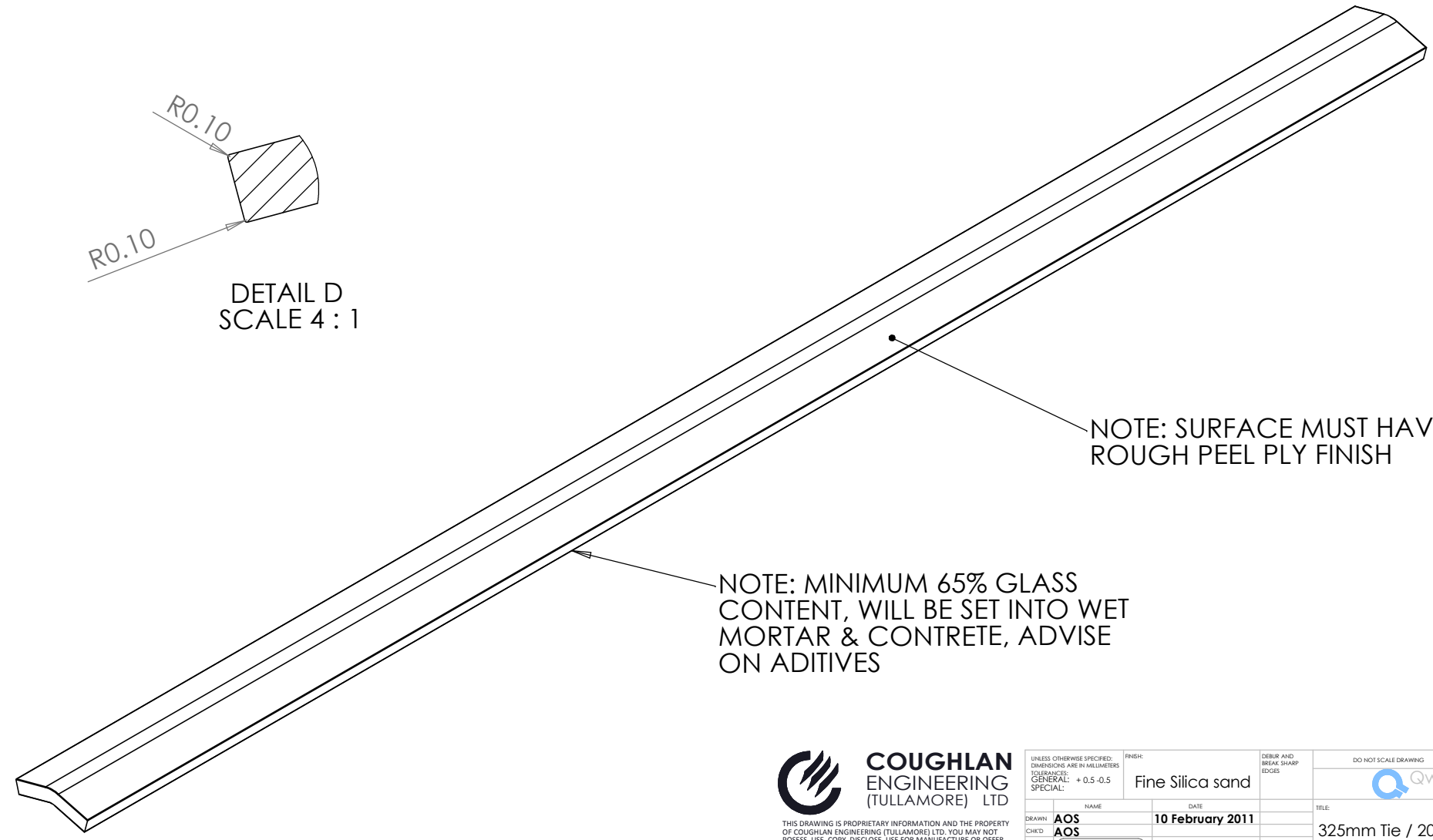
SECTION A-A



DETAIL B  
SCALE 4 : 1



DETAIL D  
SCALE 4 : 1



NOTE: SURFACE MUST HAVE  
ROUGH PEEL PLY FINISH

NOTE: MINIMUM 65% GLASS  
CONTENT, WILL BE SET INTO WET  
MORTAR & CONCRETE, ADVISE  
ON ADITIVES



THIS DRAWING IS PROPRIETARY INFORMATION AND THE PROPERTY OF COUGHLAN ENGINEERING (TULLAMORE) LTD. YOU MAY NOT POSSESS, USE, COPY, DISCLOSE, USE FOR MANUFACTURE OR OFFER FOR SALE THIS INFORMATION INCLUDING THE DESIGN AND MANUFACTURING INFORMATION WITHOUT THE EXPRESS WRITTEN PERMISSION OF COUGHLAN ENGINEERING (TULLAMORE) LTD. NIETER RECEIPT OR POSSESSION OF THIS DOCUMENT ALONE FROM ANY SOURCE CONSTITUTES SUCH WRITTEN PERMISSION, FAIL URE TO COMPLY MAY RESULT IN CRIMINAL AND /OR CIVIL LIABILITY.

UNLESS OTHERWISE SPECIFIED: DIMENSIONS ARE IN MILLIMETERS TOLERANCES: GENERAL: + 0.5 -0.5 SPECIAL:		FINISH: Fine Silica sand	DEBUR AND BREAK SHARP EDGES	DO NOT SCALE DRAWING	REVISION
DRAWN: AOS	NAME: AOS	DATE: 10 February 2011	TITLE: 325mm Tie / 200mm cavity	Qwik-Fix®	
CHECKED: AOS	APPROVED: 	MATERIAL: E-Glass Fiber	DWG NO. QF-WT-325-200	A3	
WEIGHT:			SCALE: 1:1	SHEET 1 OF 1	